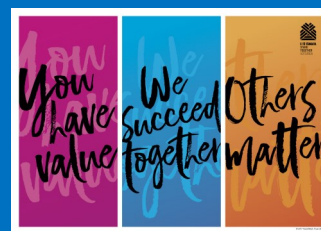


8 May 2024

Week 2 Term 2

Newsletter 6



## Coming Up...

Wed 8 May	- Jump Start 2.00pm - Assembly 2.15pm
Thurs 9 May	Cross-country @ Crosbie Park
Fri 10 May	X-country postponement, if req'd
Mon 13 May	Board meeting 6.00pm
Wed 22 May	Meeting for parents of New Entrants due to start, 6.30pm
Fri 24 May	Junior Disco (Years 1-3) 5.30–6.30pm, Senior Disco (Years 4-8) 6.45–8.00pm
Tue 28 May	- Year 3/4 x-country, Avonhead - NW Choir Festival rehearsal
Fri 28 June	Matariki public holiday <b>CLOSED</b>

## PRE-ENROLLED NEW ENTRANTS' PARENT EVENING



**WEDNESDAY 22 MAY**  
**6.30-7.30PM**

**INTRODUCTORY SESSION FOR PARENTS OF CHILDREN PREPARING TO START SCHOOL**

# RUSSLEY CROSS-COUNTRY

Years 4-8 Crosbie Park 11am – 1.15pm

<b>Race 1</b>	Year 4 boys: 1.5km (1.5 laps)
<b>Race 2</b>	Year 4 girls: 1.5km (1.5 laps)
<b>Race 3</b>	Year 5 boys 2km (2 laps)
<b>Race 4</b>	Year 5 girls 2km (2 laps)
<b>Race 5</b>	Year 6 boys 2km (2 laps)
<b>Race 6</b>	Year 6 girls 2km (2 laps)
<b>Race 7</b>	Year 7 boys 3km (3 laps)
<b>Race 8</b>	Year 7 girls 3km (3 laps)
<b>Race 9</b>	Year 8 boys 3km (3 laps)
<b>Race 10</b>	Year 8 girls 3km (3 laps)



Thursday  
9 May

little Sister  
COFFEE CART

Years 0-3 Crosbie Park 1.30pm – 2.30pm

<b>Race 1</b>	Year 2 boys: 1km (1 lap)
<b>Race 2</b>	Year 2 girls: 1km (1 lap)
<b>Race 3</b>	Years 0-1 boys: 1km (1 lap)
<b>Race 4</b>	Years 0-1 girls: 1km (1 lap)
<b>Race 5</b>	Year 3 boys: 1km (1 lap)
<b>Race 6</b>	Year 3 girls: 1km (1 lap)

## Principal's Message

Tēnā koutou katoa. Nau mai haere mai ki te kura Te Parito Kōwhai Russley. Welcome back after the April holidays. A special welcome to new students who have started school. We know you will be well supported.

### Finland trip

I was privileged to travel to Finland during the break to explore the Finnish education system; a country not too different from NZ in terms of population and boasts of 180,000 lakes and 2-million saunas! Finland has one of the world's most highly regarded education systems. It has also ranked top of the world's happiest nation list for the past seven years.

Alongside other New Zealand and Australian principals, I was fortunate to spend a week at Tampere University, a couple of hours north of Helsinki. We attended lectures and visited schools and early childhood centres to learn about Finnish education, both at individual school and whole system levels.

The Finnish school system starts with two years of Early Childhood Education and Care (ECEC) for four and five-year-olds. The focus is on play-based learning, where the children are nurtured to develop risk-taking, self-management, cooperation and collaboration skills. This is followed by one year of pre-school, designed to prepare children for school. Minimal academic learning takes place during this time.

Formal schooling starts at Grade 1 (seven years of age) and continues to upper secondary. School attendance is compulsory until 18 years old. At the end of secondary school, the students

sit a matriculation exam, which allows them to proceed to tertiary education. This is the only time that students will sit for the national examination during their time at school.

There are no private schools in Finland, and education is free right up to doctoral level.

A key mantra in the Finnish education system is "less is more". In Grades 1-4, students attend a maximum of 20 hours per week. It is common for children to go home by themselves at noon from as young as seven or eight years old while their parents are still at work. One of the most noticeable differences between our education systems is how well-resourced the Finnish system is. Schools receive significantly more resources to support children with special learning needs or who are at risk of not achieving at the same levels as their peers. This was also apparent in how they support immigrants and refugees entering Finland.

Another notable difference is how they train their teachers. Many of the top secondary school graduates go into teacher training. Only 20% of those who apply for a teaching degree are accepted and these students are required to study through to Masters level; 5 years in total. A very close relationship exists between universities and schools that ensures a consistent delivery of teacher training.

Last, but certainly not least, politics does not play a part in developing the Finnish educational environment and curriculum. This is achieved by a highly collaborative process involving consultation between parents, students, and

educators. As a result, a high level of trust exists within the system. One of the presenting professors commented that it would be the end of any political party that dabbled with or became involved in education policy.

Many things from Finnish society simply can't be replicated here in New Zealand as our societies are quite different. However, it was clear to me that we can take several valuable lessons from Finland, which have contributed to their highly-regarded education system. A wonderful experience to be part of.

### Te Kōhure camp

Last week, I attended Te Kōhure (Year 7&8) camp in Hanmer Springs. Firstly, I congratulate the students who took part. The manner in which they conducted themselves and their response to challenges was fantastic. Secondly, to the parent-helpers who attended, a heartfelt thank you for your support. We appreciate that finding time for such activities is increasingly challenging. Finally, to our teaching staff, thank you for your willingness to continue to provide these opportunities for your students. A significant amount of behind the scenes planning and preparation goes into making these experiences possible for Russley students.

Ngā mihi

Greg Lewis  
Tumuaki | Principal  
[principal@russley.school.nz](mailto:principal@russley.school.nz)



## Kōwhai Awards

*Manaakitanga — Respect*

Te Kōhure (Year 7/8)	Te Māhuri (Years 4-6)	Te Kākano (Years 0-3)
Ryusei Sasaki, Madeline Jones, Luca Kim, Natalia Wakelin, Aries Moana, Myah Andrew, Lucas Yee, Calvin Sanchez	Lily Burgess, Nikhil Chelle, Noah Clark, Scarlett Henderson, Ma'ine Raru, Joshua Massyn, Damon Wu, Polina Konstantinova, Sophie Halliday, Elena Pearman, Medhansh Kharola, Aiden Wong	Natreace Cosgrove, Adeline Lee, Daniel Massyn, Archie Li, Phoebe Oliver, Andson Cao, Quinn Richmond, Liliana Collins, Jack Oxby, Tiana Rupene-Lee, Mariam Adwy, Nevaeh George, Benjamin Sun, Matthew Firestone, Ariana Aliwate
<b>Te Tohu Kōwhai Winners:</b> Isiah Collins-Polata	Charlie Sparks	Evie Robertson

TE PARITO KOWHAI RUSSLEY SCHOOL PTA  
INVITES OUR STUDENTS  
TO A

# DISCO

FRIDAY 24TH MAY 2024



**COST: \$2.50**



Junior (Years 0-3) 5:30-6:30PM

Senior (Years 4-8) 6:45-8PM

Snacks (incl GF+ DF+ Halal) and  
Glow in the dark temporary tattoos will be  
available for purchase.

Please bring water in your own drink bottle

Please note that ALL children MUST be  
picked up by an adult  
at the side door of the hall  
at the end of their disco



## School Parent Portals



Caregivers can now access their child/ren's school information via the *caregiver portal* on the school's student management system, **edge**.

The *caregiver portal* gives parents online access to their child's attendance, school account and, in time, their school achievement data. The portal also enables parents to pay school bills at the click of a button.

To login, you must use the email address that the school holds for you. This is the one you provided with your child's enrolment and is the one that receives newsletters and other email notices from the school.

### Option 1

If you already have the SchoolAppsNZ mobile app on your phone, click the *parent portal* button on the opening screen;

### Option 2

Enter the website <https://parent.edgelearning.co.nz/> into your browser.



1. Type your details into the email field.
2. Click 'Forgot Password' to receive an email with a 'reset your password' link.
3. Once logged in, click on your child's name to access:
  - Attendance
  - School Payments *Parents can view a balance and a list of items owing, and they can pay online via Ezy pay*
  - Assessment data *(available when published by the school)*
  - Student Reports *(available when published by the school)*

If you have problems accessing the portal, contact the school office.



**PAYWAVE** is now available at the office!

## UC's Kiwi Exams

### English, Maths, Science, & Spelling Competitions

Final days to enter Year 5-8 students in the annual Kiwi competitions in English, mathematics, science and spelling. Students may enter one or more subjects @ \$9.90. Tests will take place at school in the final weeks of Term 2. **To enter, please [click this link](#)**. Closes 10 May.



## Parent/Teacher & Student Conferences

save the date

Mon 1 July 3.15pm-6.15pm

Tues 2 July 1pm-7pm

NB - school closes 12.40pm Tuesday 2nd

## High School Applications

Secondary schools often request a Year 8 applicant's previous school report. Our school meets this requirement by uploading a year-end summary to a student's *Educa portfolio* for parents to download or print.

- Go to your child's **Educa** online profile and click *stories*.
- Scroll to *End of Year Achievement*
- A one-page summary of a student's learning achievement may be downloaded, attached and/or printed.

If further information is required to support your child's high school application, repeat the steps for any of the learning stories on your child's Educa portfolio.



# ROSEMARY PLANT SALE

\$5

The PTA will be selling 5cm pots of Tuscan Blue Rosemary from Waimea Nurseries after school between 3 and 3.30pm on Wed 15th, Thurs 16th and Fri 17th of May (or until our stock runs out) outside the school hall.

\$5 each by cash, or bank transfer is available.



## WE ARE HIRING

### JOIN OUR TEAM!

#### PART-TIME CLEANERS

- Light residential cleaning only
- Paid travel time
- No qualifications required
- Flexible hours to suit parents and students
- All training and equipment supplied

APPLY NOW



[recruitment@access.org.nz](mailto:recruitment@access.org.nz)

**Access**  
community health  
Hauora Tara-A-Whare



## Community Notices

### **Busy Bumbles Before & After School Care**

Our Term 2 programme offers Russley children awesome crafts, food activities, games, sports and more. Secure your spot in Term 2 by [clicking here](#).



Further details about our Before and After School programme, along with lots of other useful information, can be found at: <https://www.busybumbles.co.nz/>

### **Dance Fitness Christchurch**

In the Russley School Hall on **Mondays** 7.00pm. Ph Gillian 021 821 260.

### **Karate At Russley**

5–13 years—Thursdays 5pm - 6pm. Adults' class Thursdays 6pm—7.30pm. [hayden@takecontrol.co.nz](mailto:hayden@takecontrol.co.nz)

### **St Thomas of Canterbury**

Open day for 2025 enrolments Tuesday 14 May, 9.00am-12.00pm. Tours from 9.00am and principal presentation 10.00am. <https://www.stc.school.nz/>

### **Villa Maria College**

Open day Thursday 23 May. Year 9 intake sessions at 9am and 1pm. Year 7 intake session at 11am. [www.villa.school.nz](http://www.villa.school.nz)

### **Canvas Bag Drama Classes**

Is your child dramatic? Do they love acting out stories? Join Canvas Bag Drama School (Merivale campus) for Term 2 and be in our fabulous showcase performance. Term 2 classes for 5-17 years begin 29 April. A structured fun-filled social environment with improvisation and role-play to develop feelings of self-worth and the ability to confidently express thoughts and feelings. Free first-class trial! Please enquire at [info@canvasbag.nz](mailto:info@canvasbag.nz) or ph **021 222 7273** or check out [www.canvasbag.nz](http://www.canvasbag.nz)

### **Tots to Teens latest issue**

is packed with content for parents. Should you worry about your late talker? Choosing between NCEA, IB and Cambridge. Focus techniques for better learning. Travel sickness remedies. Road safety. Dealing with a rare disorder. Kids' immunisations. Big emotions. Comfort food recipes. PLUS awesome giveaways.

### **Burnside High School**

Open evening Tues 14 May, 5.45pm—9.00pm. Principal's address at 5.45, 6.30 and 7.15pm in Aurora Centre. [www.burnside.school.nz](http://www.burnside.school.nz)

### **Hagley College Open Night**

Open evening Wednesday 29 May starting in the Aurora Auditorium with presentations at 4.30pm, 5.30pm or 6.30pm, followed by a look around the college and a chance to meet staff and students. <https://www.hagley.school.nz/enrolment/year-9-enrolment/>

### **Weekly Singing and Acting Workshops**

Ages 8+  
Want to learn to sing? Or develop your acting skills?  
4-5pm Singing  
5.15-6.30pm Acting  
Weekly workshops Thursdays 9 May to 4 July  
Plus a combined afternoon showcase Saturday 6 July  
\$150 per term / \$120 (CSC Holders)  
Sign up for both workshops and get 15% off  
Phillipstown Community Hub. Register by 6 May  
<https://forms.gle/bmsZAtVvi6NR8c9r8>  
Or email [luminairescharitabletrust@gmail.com](mailto:luminairescharitabletrust@gmail.com)

### **Nor'west Brass**

Local brass band with a strong focus on developing brass and percussion players. Based in northwest Christchurch, our band is open to anyone from beginner to advanced. We aim to provide opportunities for anyone who wants to experience playing in a band, regardless of ability. Currently recruiting new players from Year 3 up. Players who reach a competent level by the time they reach high school will be better placed to make the most of the musical opportunities available.  
029 777 4233 (Bill Vail)  
[norwestbrass@gmail.com](mailto:norwestbrass@gmail.com)  
[www.norwestbrass.nz](http://www.norwestbrass.nz)

**Pickleball**  
for Kids

Wednesday afternoons  
New Players welcome  
No bookings required

**\$5**  
Per Person

**Starts**  
**17 April**

Burnside Park Tennis Club  
Burnside Park  
336 Avonhead Road  
Burnside

3.30 pm - 5.00 pm

More Information:  
[burnsideparktennis@gmail.com](mailto:burnsideparktennis@gmail.com)

Cancelled if weather is adverse

The poster features a large, stylized illustration of two blue tennis rackets with yellow pickleballs. The background is dark blue with a light blue sky at the top. Text is in white and yellow. A New Zealand flag is shown in the bottom left corner.

Stay 'Connected'  
With our School App!

Simply Download 'SchoolappsNZ' from the Google Play or App Store & search your school once installed.

The image shows a smartphone displaying the 'SchoolappsNZ' app interface with the text 'Connected At All Times'. The background is light blue with confetti.

Web: [www.russley.school.nz](http://www.russley.school.nz) Email: [reception@russley.school.nz](mailto:reception@russley.school.nz)  
Payments to: Russley School Board A/c No: 03 0830 0307669 00